

CORRECTIVE ASSIGNMENT

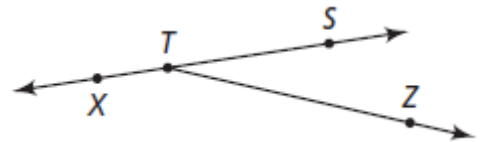
NAME: _____

1.1 POINTS, LINES, and PLANES

DATE: _____

Use the figure on the right to answer 1-4.

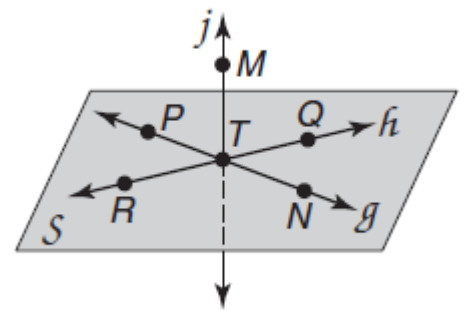
1. Name a ray.
2. Name a line segment.
3. Name a pair of opposite rays.
4. Draw \overleftrightarrow{SZ} on the figure.



Use the figure on the right to answer 5-12.

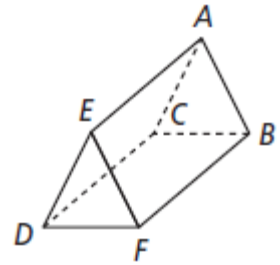
NOTE: Line j intersects plane S at point T . Point M is not coplanar with plane S .

5. Name 3 collinear points.
6. Name 4 coplanar points.
7. Name \overrightarrow{PT} another way.
8. What is the intersection of \overleftrightarrow{RQ} and line g ?
9. Draw \overleftrightarrow{PR} on the figure.
10. Name a pair of opposite rays.
11. Name plane S another way.
12. Bob says "points P, R, M are coplanar"
Sarah says "points P, R, M are not coplanar"
Who is correct? Explain why.



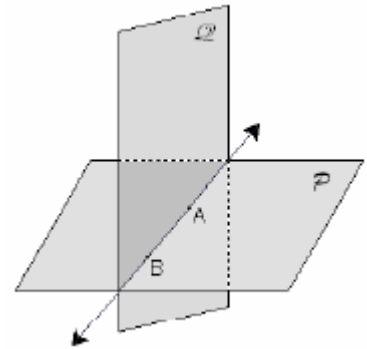
Use the figure on the right to answer 13-18.

13. Name 4 coplanar points.
14. Name 4 non-coplanar points.
15. What is the intersection of plane ABC and plane DEF ?
16. Shade plane DEA on the figure.
17. Name a segment with one endpoint at point C .
18. Bob says " \overrightarrow{ED} and \overrightarrow{EF} are opposite rays"
 Sarah says " \overrightarrow{ED} and \overrightarrow{EF} are not opposite rays"
 Who is correct? Explain why.



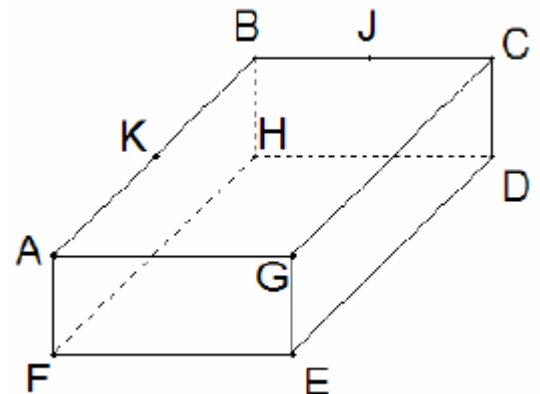
Use the figure on the right to answer 19.

19. Name the intersection of plane P and plane Q .

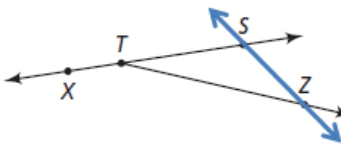
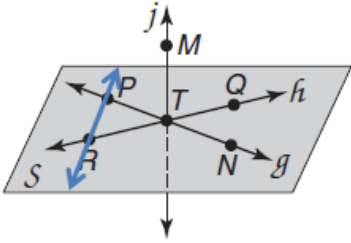
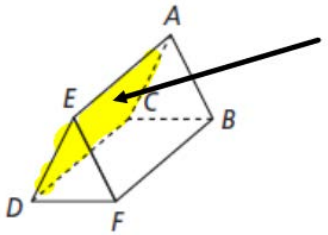
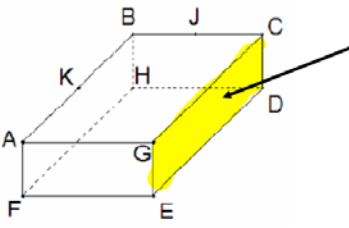


Use the figure on the right to answer 20-23.

20. Shade plane GED .
21. Name two line segments that share point H as an endpoint.
22. What is the intersection of \overrightarrow{AK} and \overrightarrow{CB} ?
23. Name 3 collinear points.



1.1 CORRECTIVE ASSIGNMENT ANSWERS

<p>1. there are a bunch, here are a couple of examples: $\overrightarrow{TS}, \overrightarrow{TX}, \overrightarrow{TZ}$ Don't freak out if you don't see yours, it could still be right!</p>	<p>2. there are a bunch, here are a couple examples: $\overrightarrow{XT}, \overrightarrow{ZT}, \overrightarrow{TS}$</p>	<p>3. \overrightarrow{TS} and \overrightarrow{TX}</p>	<p>4.</p> 
<p>5. there are a bunch, examples: PTN, RTQ</p>	<p>6. there are a bunch, example: $RPQN$</p>	<p>7. \overrightarrow{PN}</p>	<p>8. point T</p>
<p>9.</p> 	<p>10. 2 possible answers \overrightarrow{TR} and \overrightarrow{TQ} or \overrightarrow{TP} and \overrightarrow{TN}</p>	<p>11. plane RPT</p>	<p>12. Bob, any 3 points are coplanar. It may not be drawn on the picture, but you could draw it in. Just like any 2 points are collinear.</p>
<p>13. there are a bunch, here are a couple examples: $EABF, DCBF$</p>	<p>14. there are a bunch, here is an example: $DEFC$</p>	<p>15. none, they don't intersect.</p>	<p>16.</p> 
<p>17. there are a bunch, here are some examples: $\overrightarrow{CA}, \overrightarrow{CB}, \overrightarrow{CD}$</p>	<p>18. Sarah, the rays do not go in opposite directions to form a line so they are NOT opposite rays.</p>	<p>19. \overrightarrow{AB}</p>	<p>20.</p> 
<p>21. any 2 of these: $\overrightarrow{HB}, \overrightarrow{HD}, \overrightarrow{HF}$</p>	<p>22. point B</p>	<p>23. AKB</p>	